

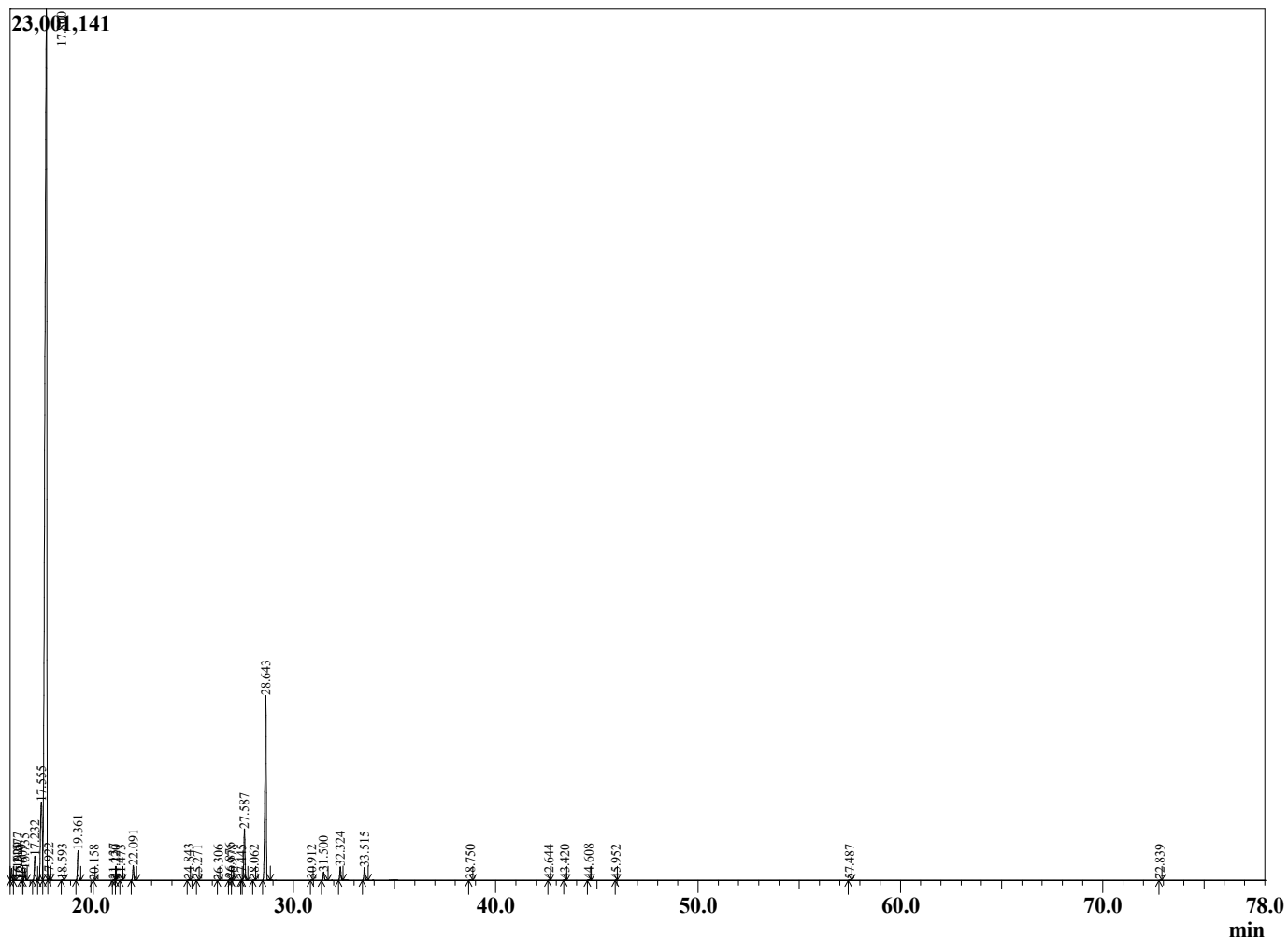
Sample Information

Sample Type : Essential Oil  
 Sample Name : Eucalyptus radiata :  
 Injection Volume 0.10

Eucalyptus Narrow Leaf  
 Lot# AUZ31-ZE  
 Country: Australia



Chromatogram Eucalyptus radiata



R.Time	Name	Area%
3.839	3-Methylbutanal	0.01
3.952	Unidentified	0.00
4.160	Unidentified	0.00
4.945	3-Methyl-1-butanol	0.00
11.265	Hashishene	0.01
11.535	alpha-Thujene	0.16
11.936	alpha-Pinene	2.70
12.726	alpha-Fenchene	0.01
12.825	Camphene	0.02
13.025	Thuja-2,4(10)-diene	0.00
14.090	Sabinene	1.45
14.384	beta-Pinene	0.82
14.708	Camphene analogue	0.01
15.031	Myrcene	1.32
15.929	Pseudolimonene	0.07
16.077	alpha-Phellandrene	0.50
16.215	delta-3-Carene	0.02
16.609	Unidentified	0.00
16.735	alpha-Terpinene	0.48
17.232	para-Cymene	1.23
17.555	Limonene	5.99
17.800	1,8-Cineole	68.09
17.922	cis-beta-Ocimene	0.07
18.593	trans-beta-Ocimene	0.02
19.361	gamma-Terpinene	1.28
20.158	cis-Linalool oxide (furanoid)	0.00
21.137	Terpinolene	0.03
21.220	trans-Linalool oxide (furanoid)	0.00
21.473	para-Cymenene	0.01
22.091	Linalool	0.66
24.843	trans-Pinocarveol	0.04
25.271	Camphor	0.01
26.306	Isogeranial	0.00
26.876	delta-Terpineol	0.08
26.978	Borneol	0.01
27.445	Unidentified	0.00
27.587	Terpinen-4-ol	2.46
28.062	trans-Isocarveol	0.01
28.643	alpha-Terpineol	10.65
30.912	Unidentified	0.01
31.500	Neral	0.40
32.324	Geraniol	0.63
33.515	Geranial	0.62
38.750	alpha-Terpinyl acetate	0.02
42.644	Unidentified	0.01
43.420	trans-beta-Caryophyllene	0.01
44.608	Aromadendrene	0.03
45.952	Alloaromadendrene	0.01
57.487	Eudesmol analogue	0.01
72.839	meta-Camphorene	0.01
		100.00